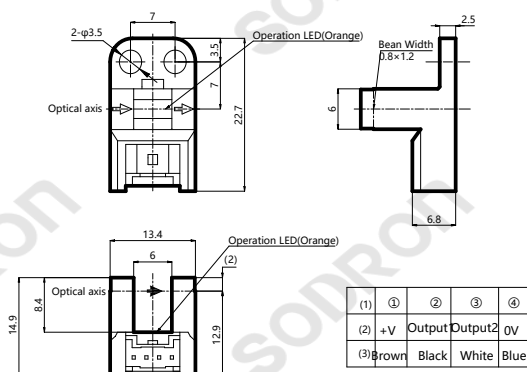
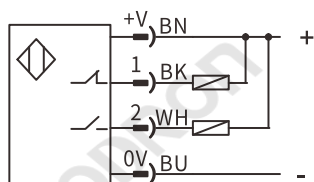


Dimensions



Model	Technical parameters	
PU-Y68 PU-Y68P	Detection method	Through beam
	Model	NPN PU-Y68 PNP PU-Y68P
Product features	Output mode	Light-ON+Dark-ON
	Sensing distance	Slot Width: 6mm
<ul style="list-style-type: none"> Through beam Fast response, High frequency IEC IP40 	Standard target	> 1.2*0.8mm (Opaque object)
	Light source	940nm infrared light
	Differential	<0.05mm
	Repeat accuracy	<0.01mm
	Supply power	< 5-24V DC±10%
	Residual voltage	< 1V (Load Current: ≤50mA)
	Current consumption	<15mA
	Load current	≤50mA
	Circuit protection	Reverse polarity connection, Short circuit protection, overload protection
	Response frequency	> 1kHz
Indicator light	Output LED: orange LED	
Connection	Connector type	
Ambient temperature	Work:-25°C~+55°C Store:-30°C~+80°C(No dew condensation or icing allowed)	
Ambient humidity	Work: 5~85%RH, Store: 5~95%RH, (No dew condensation)	
Ambient illumination	Sunlight: 10,000Lx Lamplight: 3,000Lx	
Anti-vibration	10~55Hz double-amplitude 1.5mmX,Y,Z 2h	
Withstand voltage	1000VAC,50/60Hz 1min between current-carrying parts and case	
Insulation resistance	≥ 20 MΩ (500 VDC, terminals to housings)	
Impact resistance	500 m/s ² (X, Y, Z directions, 3 times)	
Protection degree	IEC IP40	
Material	Housing Display Cover	PBT Polycarbonate (PC)

NPN



PNP

